

BRANDON VALLEY *Journal*



PROGRESS
& industry 



SPONSORED BY
MARMEN
energy

ENERGIZE YOUR CAREER!

CHOOSE MARMEN

Marmen is looking for people who are passionate about their work, who love to innovate and take on new challenges.

The Marmen Difference

- Family-owned business
- Company is expanding
- Competitive pay, plus additional pay for experience
- Getting paid to learn
- Various schedules – day shift, night shift, rotating shifts
- Comprehensive benefits
- Team environment
- Volunteering in the community
- A team and company that takes pride in their work



MARMENINC.COM

Join the team that's
become 10 years strong.

MARMEN ENERGY

APPLY TODAY!

1820 North Plum Avenue, Brandon, South Dakota 57005

Phone: (605) 582-4500 – hr@marmeninc.com

MARMEN
energy



/marmenenergy



Marmen Energy



marmen_energy



@MarmenEnergy



/marmenincofficial

In 10 Years Marmen Energy has become a staple of the Brandon Community

Marmen Energy came to the Brandon community in May of 2013. We have been in Brandon for nearly 10 years and have had the opportunity to see the community, the city, and the local region grow and develop in the last decade. Marmen first came to Brandon looking for a place to start a wind tower manufacturing plant. Since our beginning Brandon and the Sioux Falls area has grown immensely.

Marmen was started in Canada by two brothers in 1972 as a machine shop to make repairs and reproduction of machine parts. In 2002 this family-owned business expanded its markets and began manufacturing in the wind energy industry. Since this entry into the wind energy industry, Marmen is considered one of the largest manufacturers of wind towers in North America. They expanded into the United States and came to Brandon, South Dakota to have Marmen Energy dedicated to the building of wind towers. Now with over 250 Team Members at the Brandon location, Marmen Energy is still growing and expanding. As our contracts with our partners expand, we need to develop and continue adding to our team.

Our towers are shipped to wind farms all over the United States. We create wind towers of all sizes and specifications. As we evaluate operation expansion options in the U.S., growth is continuing for us here in Brandon. Through our Team Members at Marmen Energy, we can continue to create a high-quality product that keeps us advancing in the wind industry.

"While we continue to look for new people, we are extremely grateful to those Team Members who have helped build Marmen Energy to what it is today. Progress only happens because of a great team, and we appreciate ours immensely," said Aimee Miritello the HR Manager at Marmen Energy.

OUR TEAM AT MARMEN ENERGY

The process to build a wind tower has many stages. Production here at Marmen Energy can look like anything from unloading the flat 1 to 2-inch steel plates to driving our heavy lift trucks in our yard moving finished sections. You need Machine Operators, Material Handlers, Welders, NDT Inspectors, Blasters, Painters, Assemblers, Maintenance. Through assembling this large team, we can produce the massive towers you see across the Midwest.

Because these positions are integral in the process of building a wind tower, Marmen Energy hires people at all levels of experience. We have training programs designed so our Team Members can learn new skills and are equipped to work in our shop. Because of our training, it's the place for people to come and learn a new trade. We have many positions you can be paid to learn.

Not only do we pride ourselves on the product that we build, we prioritize and value the safety of our team. Our Health and Safety staff is dedicated to the education and training throughout for our Team Members at Marmen Energy. We want our team to safely pursue their career goals here at the Brandon facility.

FUTURE OF MANUFACTURING

An important part of recruitment and building a future in manufacturing for South Dakota is investing in our schools. We invest time in visiting our local area high schools, building a relationship with the Career and Technical Education (CTE) School, and engaging with our South Dakota, Minnesota, Iowa, and Nebraska Technical schools. We go out to these schools, and we invite the schools to come to us. We give tours of the plant for classes to come in and see what manufacturing looks like. We've developed internship programs for students as young as 16 so they can have exposure to manufacturing and the opportunities it brings. We partner with Build Dakota to equip students with the means to pursue an education in manufacturing.

"We are all about wanting to help future generations find their career paths," said Leah Stelley, Human Resources recruiter and school liaison at the Brandon facility. "And it's not only about financial opportunities, but about helping them find their passion and gain ample experience."

WHY MARMEN ENERGY SUCCEEDS IN BRANDON

With so many opportunities locally and regionally in businesses how has Marmen Energy continued to succeed, grow, and expand? Why do people in manufacturing choose Marmen Energy in Brandon, SD?

There are great companies in our region and they're offering great opportunities. Here's what Marmen Energy offers:

- Family-owned business
- Company is growing
- Competitive pay, plus additional pay for experience
- Getting paid to learn
- Various schedules – day shift, night shift, rotating shift
- Comprehensive benefits
- Team environment
- Volunteering in the community
- A team and company that takes pride in their work

Check out an opportunity at Marmen Energy. Join the team that's become 10 years strong. Call 605-582-4500, email hr@marmeninc.com, or go online to marmeninc.com to find out more information.



Sioux Valley Energy Assists with Economic and Community Development

One of Sioux Valley Energy's guiding principles is community service—it's the foundation of what many of the Cooperative's strategic objectives are built from. Strong communities—both economically and socially—improve the lives of those who live in and around those areas. The Cooperative has long supported growth and development in the Brandon Valley area, providing an initial investment for the Corson Industrial Park nearly 25 years ago. Today, the development is full and industrial growth has expanded into other areas. This has strengthened the economy of the entire region and manufacturing has played a significant role in that.

Sioux Valley Energy's commitment continues yet today with its recently launched community and economic development program called REVIVE 2030. The program aims to provide guidance, resources and assistance to areas that want to revive and grow their communities.

SVE's Brandon Lane and Jay Buchholz support the Cooperative's REVIVE 2030 program. The two work directly with area communities to help them accomplish their goals and initiatives. While there are limited grant funds available, the program focuses more on "boots on the ground" help.

"There is so much more to economic development than just financial investment—it takes time, dedication, and commitment and we are ready to be a strategic partner to help area communities reach their goals." said SVE CEO Tim McCarthy. He added, *"The Brandon Valley area has done a great job recruiting and retaining businesses, including*

manufacturing facilities and we look forward to powering them into the future."

One of the financial tools Sioux Valley Energy does provide to qualifying businesses and communities is the Rural Electric Economic Development (REED) fund. REED provides business and community project financing in partnership with commercial and other economic development lenders to leverage private investment and make a difference in the region it serves. Established in 1996 and governed by 25 electric cooperatives (including Sioux Valley Energy), REED assists projects that promote growth and contribute to job, business, and wealth creation, as well as improve the infrastructure, community facilities/services and economic base of rural areas in South Dakota and Minnesota.

Since 1996, the REED Fund has invested nearly \$115 million in the region through more than 375 loans (several in SVE's service territory). The REED Fund and partner lenders have combined to distribute more than \$946 million in economic investment. In addition, over 10,000 jobs have been impacted and almost three million square feet of facilities have been constructed or renovated, mostly by non-profit development corporations committed to helping the region grow.

If you want more information about the REED Fund, you can learn more at reedfund.coop. If you want discuss community development in your area, call SVE's Brandon Lane or Jay Buchholz at 800-234-1960.

revive 2030

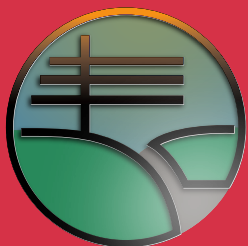


Energizing local communities to thrive, grow, and prosper.

revive 2030

Energizing local communities to thrive, grow, and prosper.

To learn more about Sioux Valley Energy's REVIVE 2030 program, give us a call at 800-234-1960.



SIoux VALLEY
ENERGY

A Touchstone Energy® Cooperative 

#Serving Our Members. Always.

800-234-1960

info@siouxvalleyenergy.com

www.siouxvalleyenergy.com

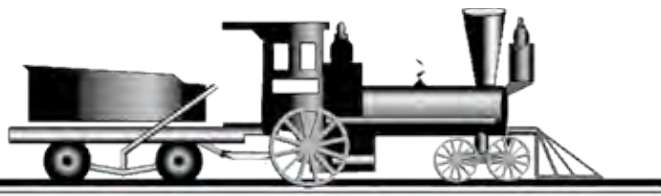
P.O. Box 216 | 47092 SD Hwy 34 | Colman, SD 57017

P.O. Box 336 | 1102 7th St SE | Pipestone, MN 56164

P.O. Box 857 | 108 N Heritage Rd | Brandon, SD 57005

1185 Ruud Tr, Ste. #4 | Hartford, SD 57033

Sioux Valley Energy is an equal opportunity provider and employer.



Midwest Railcar Repair, Inc.

Midwest Railcar Repair has been a part of the Brandon community for over 20 years. In fact, it's a business that started in 1954 as a servicing facility for the Sioux Falls meatpacking plant. Relocating twice during its four decades in Sioux Falls, the business moved to its current location just north of Brandon in early 2000. The current owner Greg Carmon purchased the company in 1988 from GE and constructed the current state-of-the-art facility now home to this nationally-rec-

ognized servicing facility.

As the name suggests, repairing of railcars is their focus. Today, these railcars come from all over North America to our local business to receive inspections, interior cleaning, regulatory qualifications, conversions, alterations, painting, interior lining and damage repairs.

Repairing these 110-ton behemoths requires space, technology and the expertise that Midwest Railcar Repair brings to the industry. With a capacity for over



700 railcars on-site, their 38 specifically-designed indoor repair stations allow the skilled employees of Midwest Railcar Repair to achieve what few in the nation have the expertise to keep the nation's railcar assets on-track.

Combine those elements with a Midwestern work ethic and you have the gold standard of the industry.

Did you know they have their own full-fledged waste water treatment plant and metal fabrication shop on-site? The railcar industry is so important that even the American Welding Society has a specification specifically developed to cover the welding standards for the manufacturer and maintenance of railcars, locomotives, and their components intended for North American railroad service. An industry with calibrated flashlights, certified tape measures and nationally qualified specialists is high-tech.

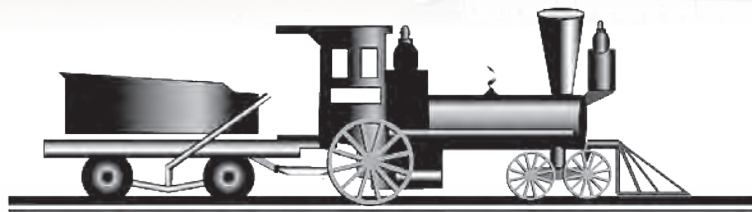
With railcar technicians skilled and certified in the techniques of: ultrasonic inspection, thermography inspection, magnetic particle inspection, dye penetrant inspection, hydrostatic inspection; welding of carbon steel, stainless steel, aluminum and industrial blasting, painting, lining and tank car cleaning, they can do it all. Cleaning, repairing and maintaining railcars that haul products ranging from corn, soybeans, flour, sugar, salad oil, corn syrup, ethanol, gasoline, diesel fuel, jet fuel, crude oil and almost every-

thing in between. They perform Kosherization of railcars right here in Brandon, S.D., that allow those cars to haul Kosher products. In fact, the next time you treat yourself to M&Ms or any other Mars Candy, know that the skilled employees of Midwest Railcar Repair are maintaining the railcars hauling that delicious chocolate.

As an integral member of the South Dakota economy — with an annual payroll exceeding \$8 million — the company understands the importance of building strong communities. The company and employees donate time, materials and funds to area youth sports and community organizations. Carmon, himself, is past chair and board member for the Brandon Valley Area Chamber of Commerce, a board member for the Brandon Community Foundation, Sioux Falls Area Community Foundation and Build Dakota Scholarship program.

Midwest Railcar Repair, Inc. believes in rewarding employees for their skilled work by offering a full suite of benefits coupled with excellent wages and opportunities for advancement. Join our team today!





**Midwest
Railcar Repair, Inc.**

**GET YOUR
CAREER
ON TRACK**

CHECK US OUT ONLINE AT MWRail.com

*Are you searching for a new career with **outstanding pay, benefits and opportunities for advancement?** Midwest Railcar Repair, Inc. is looking for individuals with a **willingness to learn** and the **desire to succeed**.*

*Join our **supportive work environment** that **promotes teamwork**. We continually strive to help employees become **successful in their career** while providing a **work / life balance**.*

**\$5000 Hiring Bonus | Health, Life, Dental & Vision Insurance | PTO | Paid Holidays
Retirement Benefit Plans with Generous Company Match**

**SEEKING APPLICATIONS FOR
RAILCAR REPAIR TECHNICIANS**

Day Shift • 6:00 am - 2:30 pm • Monday - Friday

JOIN OUR TEAM

APPLY TODAY!

www.mwrail.com or in person

25965 482nd Ave • Brandon, SD 57005 • 605.582.8300
Greg Carmon, Owner | David Smook, President

UNLOCKING GROWTH WITH MANAGED SERVICES



How Digital Transformation is Powering Local Small Businesses

Businesses of all sizes are experiencing a digital transformation, but it can be particularly impactful for local small businesses. With the help of managed services, the power of technology is available to businesses of all sizes. A managed services provider (MSP) gives companies access to cybersecurity, data storage, and other tools that were previously accessible only to large corporations. By taking advantage of these services, smaller businesses can leverage technology with the help of a managed services provider, like IT Outlet, to drive success and growth in their communities.

Rachael Neiman was looking for a local MSP to improve operations at the Brandon Chamber when she reached out to IT Outlet.

“When the Chamber was looking for a vendor, it was essential to support a company that was local and a member of the Brandon Chamber of Commerce,” she said.

Rachael understands that the modern business world is rapidly shifting, and for the Brandon Chamber of Commerce to stay up-to-date with most technologies, they needed to make some improvements to better serve investors and Chamber members.

“We were looking for a company that had remote monitoring, local customer service, automatic updates, maintenance of software and hardware, as well as remote cloud-based backup service,” Rachael said.

“Allowing us to have peace of mind that a knowledgeable team is taking care of it all.”

IT Outlet has an arsenal of highly-qualified Nerds on their MSP team that can help maximize businesses’ potential by assessing your current network to see what vulnerabilities or pitfalls your organization is experiencing that could be contributing to bandwidth issues or preventable downtime.

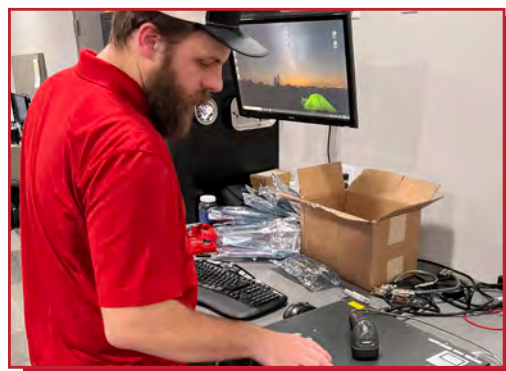
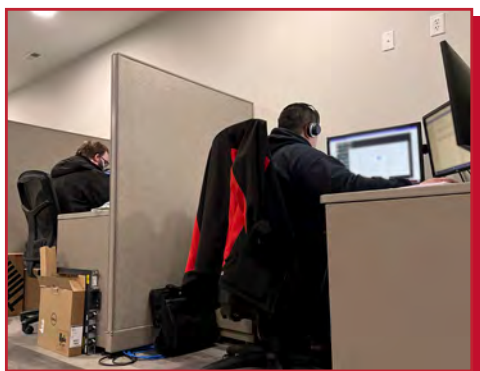
Not only does IT Outlet’s MSP focus on operational

support, but ensuring that they are leveraging cutting-edge, state-of-the-art cybersecurity and backup technologies to help reduce costs and guarantee your critical information is secure and protected in the case of a cyberattack or data breach.

“By partnering with a company that specializes in Managed Services we felt the Chamber would have all the safeguards in place for protection and data recovery in the instance that data loss or corruption would occur.”

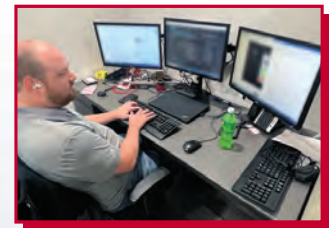
When businesses utilize IT Outlet’s Managed Services Program, they are unlocking exponential growth potential by taking advantage of advanced technology and capabilities without risking their data or operations in the process.

Is your business ready to transform into the digital world and unlock your full potential in a fast-changing business landscape? Scan the QR code to contact The Nerds You Love To Know from IT Outlet and realize the power of modern tech.



LOCAL IT SUPPORT AT A BUDGET FRIENDLY COST

Over 50% of all cyberattacks target small to medium sized businesses. IT Outlet’s Managed Services Program (MSP) is essential to keep your business secure and operational 24/7.



What Our Nerds Can Help Your Business With

- ✔ Strategy and operational support
- ✔ Data storage, backup and, recovery
- ✔ Phishing and scams
- ✔ Device management

Scan the QR Code to learn more



CALL US AT (605) 274-3400



www.solesenterprises.com

605.582.2220

BRANDON, SD



Founded in 2007, Soles Enterprises, Inc. is a family-owned and operated business that has become a leader in outside and temporary commodity storage. We work primarily with elevators & cooperatives who store grain outside over the winter months. Our operations began with a focus on the installation of the tarp. Over the years, we've expanded into selling pre-fabricated tarps and now we build our own.

Located just north of the I-90 Brandon exit, we have a production facility where the tarps are converted into custom sizes.

We also have our own team of installation specialists. Our installers cover hundreds of grain piles each harvest and it's this experience that allows us to really hone in on what works best. Our installers help us identify areas of improvement with our tarps to ensure that we're providing the very best quality.

Our motto is build, install, improve, repeat. And, that's what we do. We have a proven process and we know what our customers need. Our mission is to provide the very best customer service, industry expertise, and fast, efficient installations.

We are a growing, family-owned business and when it comes to commodities...

**WE GOT YOU
COVERED**

BRANDON PLAZA



New Commercial Development in Brandon, SD

50 Acres Total Land
20 Acre Sand Bottom Lake
14 Lots (.76 - 4.8 acres)

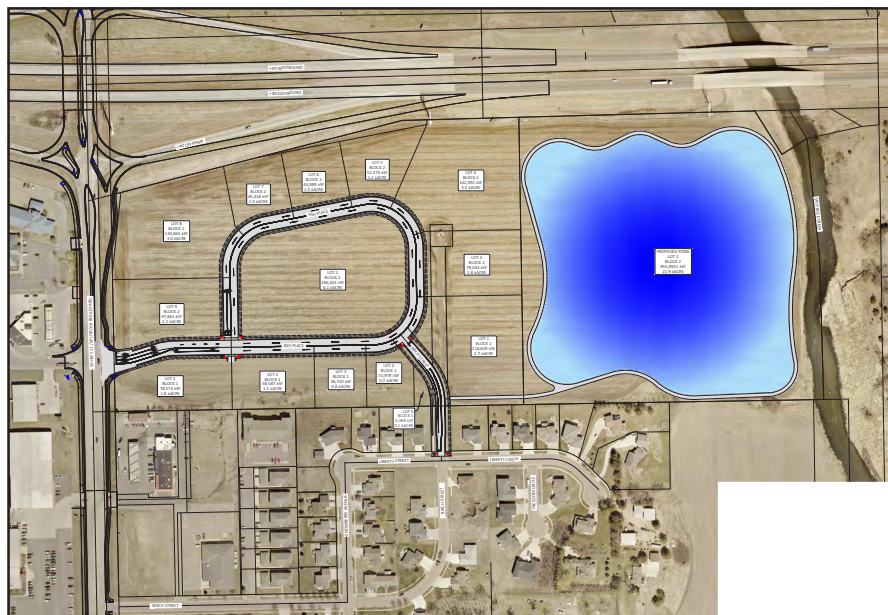
Brandon 90 Plaza will be located on the north side of Brandon at the intersection of Interstate 90 and Splitrock Boulevard/ Highway 11. Daily traffic volume is:

I-90 West of Exit 406: 25,200

I-90 East of Exit 406: 17,400

Splitrock Boulevard: 13,300

Projected 2045 Splitrock Boulevard: 23,500



Get in touch with us to learn more about Brandon 90 Plaza's exciting opportunities.

CONTACT Darrel Viereck - Developer **PHONE** 605-366-3100 **EMAIL** darrel@darrelviereck.com

You can learn more about the development on our website at www.brandon90plaza.com

Growing with Brandon

Brandon 90 Plaza ready for business endeavors to break ground

After five years of planning, putting in infrastructure and attracting potential businesses, the landscape of Brandon Plaza 90 is on the cusp of change.

Darrel Viereck has been working with JSA Consulting Engineers, the City of Brandon, and other local partners to move the plaza from the drawing board, and into reality.

“The lots are ready. The infrastructure is in the final stages of preparation. We are ready to start breaking ground and welcoming new businesses to the community of Brandon,” said Viereck, the developer for Brandon 90 Plaza. “We’re enthused about this project. The projections for the tax base impact it will

have for the city of Brandon will be incredible.”

Viereck shared that the Brandon 90 Plaza is receiving attention from a large regional grocer, an appliance store, furniture stores, hotels, banks, and several fast food restaurants.

“We are attracting businesses in many different industries. Although we are not allowed to speak to the specifics at this moment, we are working with an ‘anchor’ store that will help bring all the pieces together,” said Viereck.

Located south of 1-90, the Plaza sits on prime real estate. Brandon 90 Plaza rests on 50 acres of land. 27 acres of land that has

been set aside for commercial development, and 17 acres dedicated to a private lake that will create a prime view for two planned hotels and an events center. The lake will include a fountain, be stocked with fish to catch-and-release, and will be encircled by a bike trail.

“We want to thank everyone who helped take part of the feasibility study for the events center, especially Rachel Neiman at the Brandon Valley Area Chamber of Commerce,” said Viereck. “She did an amazing job reaching out to local businesses and making it a smooth process. We are ready to see where this goes in 2023 and excited for the opportunity to see dirt being turned over. We are accepting new offers on open lots.”



FLEXIT

HYDRAULICS

Now Hiring

We are a fast-growing company, where teamwork and collaboration are key to our success. We have a lot of fun while getting our work done and believe every employee is vital to the success of our company.

3 Available Shifts

6 am - 2 pm

2 pm - 10 pm

10 pm - 6 am

Full Benefits Package

And a climate-controlled work environment!

Apply in-person at
620 E Willow St, Brandon, SD
or via our Facebook page
www.facebook.com/FlexITUSA/



— Employee Testimonials —

I love all the employees that I work with, number one. We're all a team and we support and help each other through any situation we have. ... Anytime a new employee starts, we adopt them. We want everybody to be comfortable because it's a good place to work and a good company to work for.

A FLEXIT FAMILY MEMBER SINCE OCTOBER 2018

— Amber

I like the working conditions. There's a lot of high-tech with it, but it's pretty fail-safe because it's a very good system.

A FLEXIT FAMILY MEMBER SINCE OCTOBER 2018

— Kathy

For me, I came to work at FlexIt Hydraulics because of the opportunity for growth, and that's huge for me. Getting your foot in the door on a fairly young company, I've never had that opportunity before. Everything was already established. The number two reason is the crew, the staff, the managers – there's not a lot of micro-managing – and you're treated like family. Every chance they get, they're out there trying to recognize you for a job well done.

A FLEXIT FAMILY MEMBER FOR 2.5 YEARS

— Jenny

QUALITY PRODUCTS QUALITY CUSTOMER SERVICE

FlexIT expands hydraulic hose assembly to U.S.'s southeast region

There's something to be said for not fixing something that's not broken.

And the same could be said for the customer service that FlexIT USA in Brandon has prided itself on since day one. As a result, the company, which specializes in hydraulic hose assemblies, is expanding its production to the southeast region of the United States. More specifically, Anderson, S.C. FlexIT believes that a quality product highlighted by quality customer service has propelled them to this expansion sooner than anticipated.

"I think a key part of the success is the overall service that we offer above the product," said Chad Hasert, FlexIT's chief executive officer. "Our mindset going into this is we want to be a partner (with our customers), and we want our customers to look at it the same way. We've built that partnership to the point where (companies) in the industry, all the way up to the CEOs of these companies, have a lot of pride in us. They were visiting us when we had a dirt floor yet, and we were sitting in a small ten-by-ten office, and they believed in us. We've proven ourselves to keep getting the opportunities we have. We're in meetings every week or on calls, and many of them want us to succeed. We want to succeed and help them succeed, so it's a true partnership. It's just not taking an order one day and waiting to see what happens a day later. It's planning for today but also planning for the future."

The Brandon plant operates in 32,000 square feet, and the South Carolina plant, which is on pace to begin production by April 1, is near twice that size at 57,000 square feet. Hasert



said they also could expand to 90,000 square feet at that location.

The southeastern region's expansion brings FlexIT closer to some of its customers in North and South Carolina, Georgia, Tennessee, and Louisiana.

"Logistically, we'll be closer to our customer base, which also opens up capacity here for current customers," Hasert said.

While the demand is there for FlexIT-made products, Hasert again stresses that customer service and building relationships with customers have been vital to the company's fast growth.

"I think it's the products, but we sell ourselves on service. That's it. Service to me covers all aspects, from the technical side of the part design and inspection, the quoting process, the customer service side of it, shipping product on time, getting back to emails, getting back to voice mails," he said. "We offer a lot more flexibility, and we're always reachable. There are many companies where that's only 8 to 5."

The expansion has been on the company's radar since launching FlexIT four years ago. As a result, Hasert said it was essential to pay attention to detail when setting up the Brandon location.

"I would say we never expected it to be this fast to be already putting up this large of a facility, but it's always been part of our plan," he adds.

Expanding operations to the southeast is also reflective of the less than 2 percent unemployment the Brandon-Sioux Falls area is experiencing. As a result, the company enlisted the expertise of a college professor and

two grad students to undergo a market analysis in the southeast region.

"We drew a big circle around the southeast of our customer base to learn where it makes sense to go," said Chris Swier, the director of operations for FlexIT.

The market analysis landed them in Anderson, a suburb of Greenville, S.C.

"We knew it all along, but just to make sure we were making the right decisions, it was a task for the grad students to take on. They went through labor rates, benefits, buildings, taxes, a little bit of everything, and everything kept pointing back to our original plans," Hasert said.

The southeast region has turned into a hot point for manufacturing businesses.

"If you take the U.S. as a whole and look at the proportion of the number of people that work in U.S. manufacturing, the average would be one on a proportional basis. So for that Greenville area, it's just about four, so almost four times the national average of people that work in manufacturing in that area," Swier noted.

A year ago, at this same time, Hasert and Swier forecasted FlexIT's staff numbers at the Brandon plant would be at 70. They nearly hit the mark with 68 employees on the local payroll. While they look to grow their Brandon staff to 80 – both administrative and production positions – they'll need almost double that number of employees for the Anderson plant. In early October, FlexIT hired two managers to begin learning the business.

To go along with good customer quality practices, FlexIT's top administrators say

they've aimed to make the company an excellent workplace.

"We want it to be a good place to be. Some of that is purely in the community aspect and how we relate, and some of it's environmental. We've worked hard on our plants to make sure that they're comfortable places to work at, whether that's quiet equipment or air conditioning for the plant, those kinds of things," Swier said. "We understand that people have many options for employment, and we want to make sure that we're a place that is appealing to people, and someplace they say they are proud to work."

In setting up the Anderson plant for production, Hasert said they went in with the mindset of "this is a clean slate."

"We think it should be easier because some of the tasks we did will carry over, but we're going in – and the employees are helping us with this – like we've never done it before," he said.

Adds Swier, *"The first time around, we put a lot of thought and exploration into how we will accomplish just the buildout of the plant and things of that nature. So we've got a playbook that we can pull from and say, 'OK, this worked pretty well...' I think the thing that we don't want to get into is just saying, 'his is exactly how we do it, and we're not going to listen to any new ideas' because we've got some new people that will be part of the team and they're going to have new perspectives on things, and we'd like to gain from that as well."*

With production slated to begin no later than April 1, Hasert said they're working on completing all of the product audits and approvals by late March.

"Unless we have some issues with contractors, because all of the equipment has shipped, it comes down to the contractors and employees," he said.

With the Anderson plant about to begin operations, Hasert said the company is not satisfied to rest on its laurels.

"I don't think we've had much time to sit back and let ourselves absorb all of this. There's pride. Otherwise, we wouldn't be carrying this on," he said.

What can your local **ACE Hardware** store do for you?

When people think of **Brandon Ace Hardware** they often associate the store with home improvement projects. Jason Melcher and his team are expanding their services beyond the home, and into the commercial market by offering Business to Business (B2B) services and supplies.

"We wanted to open our store to serve local businesses. We have access to over 300,000 part numbers in stock," said Melcher, Managing Partner. *"Our B2B services are geared towards keeping the work going at your job-site or on the shop floor. Troy Sabers, our B2B specialist, is our local rep that works with businesses to get what they need -- quickly. That's the local difference."*

The 'local difference' also includes the ability to help build the community in which they operate. This commitment moves beyond supplies, and into the business of making a difference in Brandon and Valley Springs. *"We just like giving back and being part of the community of Brandon,"* said Melcher.



**Starting This Spring
New Store Hours**

M-Sat 7am – 8pm
Sun 9am – 6pm

**Nationally Known
Dakota Owned**

Troy Sabers
B2B Solutions Specialist
Tsabers.acehardware@outlook.com

Jason Melcher
Managing Partner
Brandon.ace@hotmail.com

We make it our business to help your business.

Business Account Benefits:

Discounts

Receive special pricing on orders and bulk purchases.
**see store for details*

Rewards

Receive instant savings on all promo items in store.
Net 30 dating.

Inventory

Access to over 1 million items.



Convenient

Quick in-store purchases, curbside or flexible delivery. Open 7 days a week!

Helpful

We have the supplies you need and help that makes it easier for you to run and operate your business.

**Fill out your application online. Visit us at
WWW.ACEHARDWARESD.COM**

**Discounts are applied to special orders as negotiated. Some restrictions apply. See associate for details.*

Brandon building permit values take dramatic jump in 2022

New construction in the entire region continues to see significant growth, and it was no different in Brandon in 2022.

Final numbers for last year reveal a total of 625 building permits issued with a value of just over \$95 million. That number was released at the first City Council meeting of 2023 on Jan. 16.

The \$95 million value is a drastic jump over recent years. The city issued 681 permits in 2021 worth \$34,843,111. In 2020, that number was 506 permits issued valued at \$19,577,056.

City Administrator Bryan Read said the increase over recent years and the staggering \$95 million can be attributed to two things.

First, the city recalculated how they determine building permit fees. The city hadn't raised its building permit fees since 2003. However, in 2021, city Finance Officer Christina Smith said they researched a more updated formula to stay more in line with other communities in the area.

Like Harrisburg and Sioux Falls, Smith said Brandon began using the ICC (International Code Council) national average for building costs. Smith said Brandon then uses a 10 percent reduction from that final ICC formula number. That went into effect on Jan. 1 of last year, resulting in higher building permits costs.

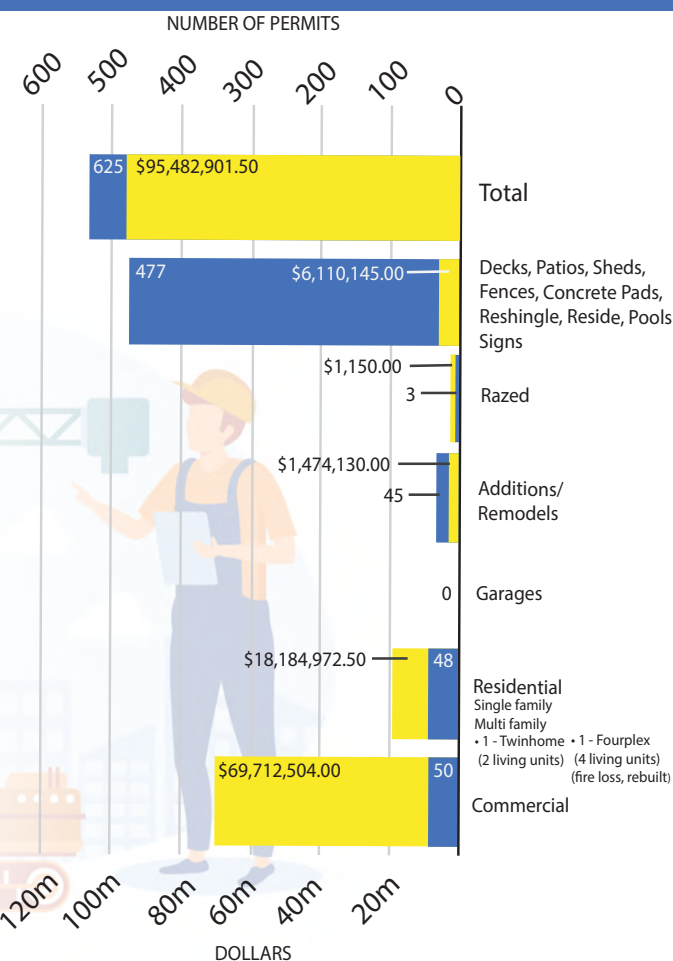
Secondly, Read pointed to the substantial commercial building permits in 2022 such as the 120,000 square foot Hegg Modular manufacturing warehouse in Encore Park on the city's east side. The addition to the high school and the new Dairy Queen on Splitrock Boulevard were also mentioned at the Jan. 16 City Council meeting.

Smith said now that the ICC formula is in place, the city will be able to keep pace with building permit costs moving forward.

"We just fell behind with inflation, costs going up," she said. "We weren't computing values correctly. We had a very low value, but we'll be able to keep up now."

With building permits up, there's obvious optimism that population numbers will continue to increase. The Council was also briefed on Brandon's 2022 population estimate coming in at 11,542, up from 11,404 in 2021. Brandon's population just 10 years ago sat at 9,248.

"That data looks terrific," Mayor Harry Buck said of the \$95 million in building permits. "It will continue to grow in that area with the population estimates continuing to grow."



C&C Manufacturing Inc.

“your production machining partner”

C&C MANUFACTURING is a precision machining company located in Brandon, SD. Specializing in production orders for OEM's, they utilize the latest technology in computer-controlled lathes and mills. Materials range from stainless steel, carbon steel, and aluminum to most types of plastic.

Started in 2002 by Chad Wells and Chris Stettnichs, **C&C MFG** has now been at their Brandon location since 2011.

With 30 employees operating under 27,000 sq ft, they are proud to serve customers in South Dakota as well as Illinois, Minnesota, Nebraska, and Texas.



900 Ash Street, Brandon SD 57005



ccmfginc.com



(605) 582-8835



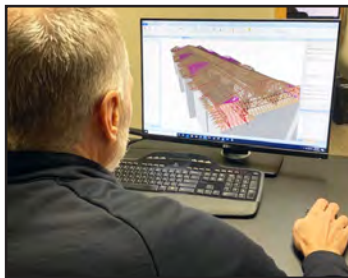
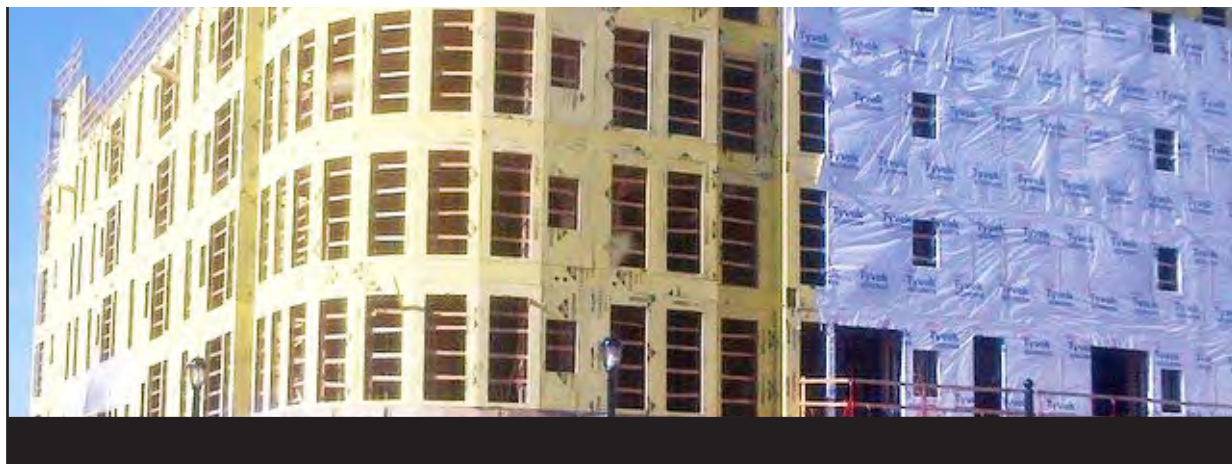
info@ccmfginc.com



Component Manufacturing Company is a family-owned, local truss manufacturer that keeps our promises to our customers. Our promise is to deliver the highest quality wood trusses, floor systems and wall panels on budget and on time, every time. We dedicate our time and work to being the most innovative, and most reliable truss manufacturer in the industry.

CMC was founded 50 years ago by Lloyd Reaves. As a returning veteran, Lloyd saw a need for quality, affordable housing and had his 'aha' moment when he noticed a specific product being used to build mobile homes. Bowstring trusses. He knew then and there that this factory he had purchased would change the face of construction, and the use of wood trusses. Lloyd also realized that wood truss technology could be the solution to all the reasons why buildings fail. After spending many years perfecting the process of applying wood truss technology to other building components, such as wall and roof brace panels and special columns, Lloyd was awarded a patent for his invention.

Today, CMC & Reaves Buildings is owned by Jeff Thue, who is an employee of CMC for 29 years. After purchasing the company Jeff continues to grow CMC and Reaves



Buildings as an industry leader in roof and floor trusses, wall panels and post-frame engineered buildings.

Jeff describes the current culture as a Christ-centered company. Regarding the work environment we aspire to be a great

place to work: a progressive, dynamic and continuously improving company that embraces world-class practices in quality, timing, involvement and simplicity. Our business is a trust, and we will be good stewards of every resource in our care.

JOBS

Make up to \$30 per hour, plus premiums!

Day and night shift available!

Lots of over-time available!

Work year-round inside!

No traveling, home every night!

Leaders promoted from within!

Excellent benefits!

Looking for a job?

**Start a career in manufacturing
with us at CMC!**



**Make up to \$30/hr plus
additional premiums!**

Day and Night Shift Jobs Available

- Affordable health insurance
- Paid time off and Holiday pay
- \$2,000 referral and bonus program
- LOTS of overtime in the Spring, Summer and Fall
- Work is year-round
- Excellent on-the-job training
- No traveling, home every night and on the weekends
- ALL promotions are internal-no outside hires!
- Opportunities to become a lead person in under a year!

*At **Component Manufacturing** we take pride in our employees and train you to succeed in our company!*

Apply Today!

Visit our website at
www.compmfg.com or
apply in person at
4101 N 4th Ave,
Sioux Falls, SD 57104

"Once you are trained in a career in manufacturing, you can do anything. If you can face the challenges day to day on the plant floor there is nothing you can't face in the real world." – Jared Powell, Plant Manager



WHAT IS HEGG DOING OVER THERE?

The short answer? We're doing what we do best—creating memorable experiences and building community.

For the longer answer, keep reading.



Welcome to Encore Park

You've probably already noticed a change in the western landscape of Brandon recently. For anyone wondering just what is going on just off of Rice Street these days, Jared Vilhauer, Vice President of Development & Finance at HEGG, is excited to share some big news for the community.

"What used to be farmland is currently being developed by HEGG into a large-scale, mixed-use development called Encore Park," said Vilhauer. "A development like Encore Park can bring so much to a community like Brandon: New retail offerings, new housing, new enterprise... It's a story we're excited to tell."

The story begins in late 2021, when HEGG purchased 107 acres of the former Ode farm. Over the past year, the company has been allocating those acres to a variety of industrial, commercial, and residential projects.

Fareway Foods is the first business to take advantage of the new retail spaces, purchasing a lot just off Rice Street that is sure to grab the attention of many commuters looking to grab a few groceries on their way home from Sioux Falls.

Encore Park's retail offerings will likely be most visible initially, but the development will boast a sizable residential footprint, as well. There are already plans in place for three hundred residential units to be added to the community in the form of four multi-family buildings.

"We see those new homes as the bright heart of Encore Park," said Vilhauer.

Building Careers at HEGG Modular

So when will this all come to fruition? Well, Encore Park's first tenant is already up and running. HEGG Modular is a brand new 127,000 square foot, state-of-the-art modular construction manufacturing facility.

If you're unfamiliar with the technology, you're not alone. Modular construction is a relatively new process in this region. In short, it is an efficient, green, high-quality process in which structures are constructed off-site, in a factory.

Using the same materials and held to the same codes and standards of quality as traditional construction, modular buildings are assembled from intricately designed individual modules. This process allows us to create beautiful, sophisticated facilities in less time than a conventional build, without compromising quality. At HEGG Modular, all construction work is done indoors, in a temperature-controlled setting. The technology promises to be revolutionary for those working in the construction industry, especially here in the Upper Midwest, where major construction projects must operate at the mercy of extreme weather.

"Say goodbye to job sites that are freezing all winter and sweltering all summer," said Vilhauer. "Working in modular construction is an opportunity to build a stable career in an industry that is, at times, very unpredictable."

Opportunity for Sale

There are still approximately fifty acres of industrial development land available for sale at Encore Park. Those fifty acres, Vilhauer notes, represent a lot of potential growth for the city of Brandon, including plenty of new jobs.

According to Vilhauer, the massive scale of the endeavor is what makes it perfect for HEGG, as it utilizes their expertise across industries, from development to construction to modular.

"What is most exciting to me about Encore Park," said Vilhauer, "is that it so perfectly embodies the mission and vision of HEGG: to create memorable experiences that build community. This is much more than just a collection of buildings and facilities. It's an opportunity to further elevate an already thriving community. We can't wait to see it come to life in the coming months."

HEGG Modular is currently hiring for a variety of positions. Interested applicants can [learn more at heggcompanies.com/careers](https://heggcompanies.com/careers).



SPARTAN EMERGENCY RESPONSE

605-582-4000 • 907 7th Ave. • Brandon, SD



Locally Built Custom Fire Trucks from Spartan Emergency Response

Located in the heart of the industrial park in Brandon, SD you'll find Spartan Emergency Response (ER), a custom fire truck manufacturer that designs and builds fire trucks for fire departments around the world.

For over a century, Spartan ER and its portfolio of brands have established a legacy as leading full-line builders of custom fire apparatus. Today, Spartan ER continues to build on the legacies that firefighters trust, with an expertise in pumpers, steel aerials and platforms.

Known for breakthrough innovations in safety, ergonomics and serviceability, Spartan ER engineering, manufacturing and sales teams have developed an agile, highly collaborative culture to serve their customers and industry.

Fire truck manufacturing is a one-of-a-kind operation that requires a lot of planning, precision, ingenuity, and expertise. From the start of the fabrication process to the final inspection and

delivery, Spartan trucks are built with a sole purpose and that is to protect lives day in and day out.

Why Choose Spartan?

Spartan ER builds on the legacies that firefighters trust. For over a century, we have been making possibilities a reality for fire crews. Our culture of collaboration and passion for the industry grows stronger every day. It's a people business through and through and it starts with the employees and their dedication and pride in building world-class firetrucks. Every day on the job at Spartan translates into lives saved in communities all over the globe. It's an honor to serve an industry whose primary mission is to save lives and protect property.

Join a company where you can make a difference and build industry-leading custom fire apparatus locally in Brandon, SD.

Spartan is always seeking to expand their team of dedicated employees. Visit www.spartaner.com to learn more.



SERVING

3 CANADIAN
TERRITORIES &
10 PROVINCES

44 STATES

MULTIPLE
LATIN AMERICAN
COUNTRIES



PUTTING FIRST RESPONDERS FIRST.



**JOIN OUR
TEAM &
BUILD
CUSTOM
FIRE
TRUCKS!**

**Benefits Day 1
Competitive Pay
Growth Opportunities
Medical Insurance
Dental Insurance
401k Match**



A LEGACY FIREFIGHTERS TRUST.

Spartan Emergency Response manufactures high-performing custom fire trucks to meet virtually any fire departments needs, no matter the operational environment. We proudly manufacture locally right here in Brandon, South Dakota and ship all around the world.

Love building trucks with purpose and ready for a change? We're looking for skilled workers to join our team and build trucks that protect property and save lives! Come grow with us!

For more information or to apply, please visit:

spartaner.com/careers

9077th Avenue N. Brandon, SD 57005



APPLY TODAY!



COME GROW WITH US!

Henkel Corporation is expanding operations in Brandon



Henkel's Brandon, South Dakota facility manufactures a variety of thermal interface materials used to produce high-performance electronics and electric vehicles. The facility has been part of the Brandon community for almost 14 years, and in October, the site celebrated the groundbreaking of a 35,000 square foot expansion. This investment includes a new building with state-of-the-art manufacturing capabilities and will double the size of the plant when complete later this year.

"We are delighted to be investing in the expansion of our production capabilities," said Bruce Lear, Director of Operations. *"The investment reinforces Henkel's commitment to the area, as well as the strategic importance of this facility to Henkel. We're proud of our work and our team in Brandon and look forward to continuing to grow."*

Thermal interface materials are heat-dissipating products fundamental to optimal performance of

all things electronic. Anything that relies on electronic function — electric vehicles (EVs), mobile phones, computers, 5G base stations, industrial robots, data center servers — produces functional heat. The 120+ employees at Henkel's Brandon facility manufacture thermal interface materials in many formats to help move heat away from certain components to improve performance and reliability.

"Our work at Brandon has a big impact," explains Matt Gedney, Safety, Health and Environmental Manager for Henkel at the Brandon site. *"For example, our products are used throughout EVs — in the battery system, control modules and many other components — to prevent overheating. Quality is a top priority because the entire team appreciates the vital nature of the materials we produce."*

Established in 2009, Henkel integrated the Brandon site into its operational footprint after

its 2014 acquisition of The Bergquist Company. The original site in Brandon encompasses approximately five acres, with another four acres recently added to support the expansion.

In addition to being recognized for their safety culture, serving the local community is another priority for the Henkel Brandon team. *"We provide funding and volunteer time to several local charities,"* explains Shift Manager Dave Gabriel, *"from the Humane Society to the Feeding South Dakota Food Pantry and an annual Angel Tree. One of the favorite initiatives among staff is 'Rake the Town,' an effort that removes yard waste and debris for residents unable to manage it themselves."*

Through a long-standing relationship with the Chamber of Commerce and on-going engagement with the local school systems, the Brandon facility employees regularly promote the benefits and importance of careers in manufacturing.

JOIN OUR TEAM!

Are you searching for a new career with excellent benefits and pay? Henkel's existing operations and future expanded facility in Brandon bring numerous manufacturing job opportunities to members of the local community. Contact us to learn more!



DARE TO MAKE AN IMPACT?

Henkel is hiring now for Production, Engineering, Quality and Warehouse positions in Brandon, SD.



JOIN US AT [HENKEL.COM/CAREERS](https://www.henkel.com/careers)



Incorporated July 24, 1973

Brandon

50



Years in the Making

Come celebrate with us!

July 22 & 23, 2023



MARMEN
energy



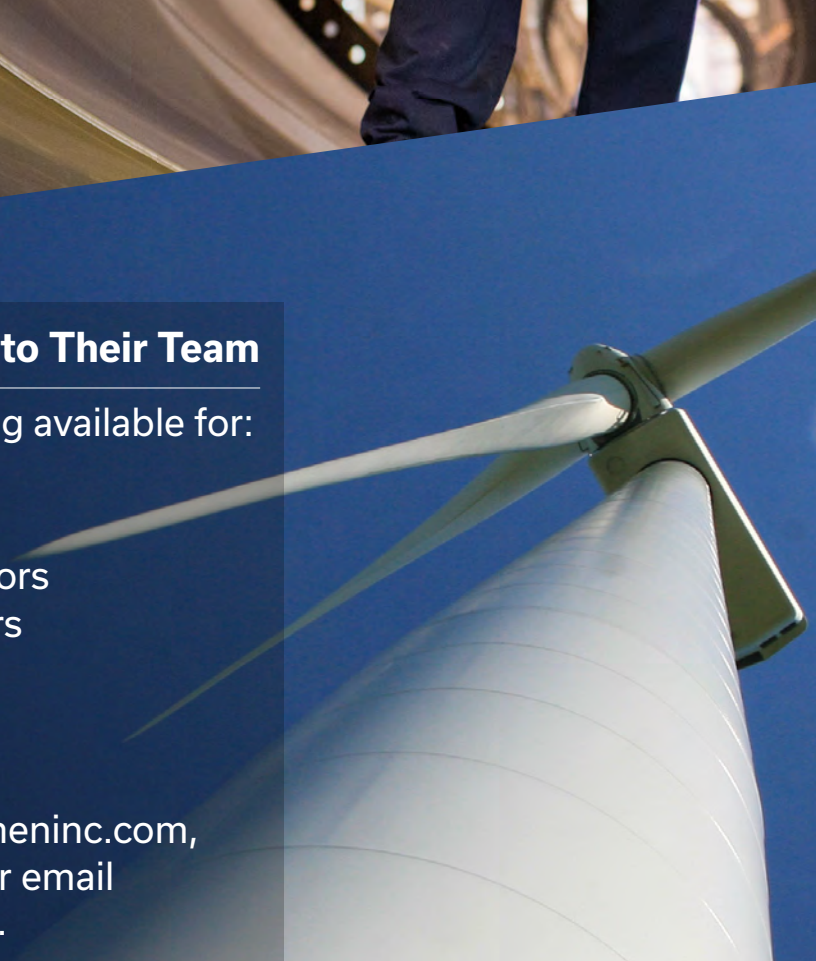
**SURROUND
YOURSELF
WITH THE
BEST**

Marmen Is Adding to Their Team

Positions and training available for:

- Welders
- Assemblers
- Machine Operators
- Material Handlers
- Painters
- NDT Inspectors
- and more!

Apply today at [Marmeninc.com](https://marmeninc.com),
call 605-582-4500 or email
hr@marmeninc.com.



**INNOVATE.
DARE TO CHALLENGE
YOURSELF.**

MARMENINC.COM